

B AC Motors

Induction Motor 180W(□ 90mm)

180W Induction Motor 180W(□ 90mm)

Motor 사양

Model		Output W	Voltage V	Frequency Hz	Poles	Duty	Starting Torque		Rated Load			Capacitor μF / VAC	
Lead Wire Type	Terminal Box Type						kgfcm	N.m	Speed r/min	Current A	Torque kgfcm N.m		
91DG*(A)-180F□	91DG1(A)-180F□-T	180	1φ 110	60	4	Cont.	7.40	0.740	1600	3.00	10.96	1.096	30.0 / 250
91DG2(D)-180F□	91DG2(D)-180F□-T	180	1φ 220	60	4	Cont.	7.80	0.780	1600	1.50	10.96	1.096	8.0 / 450
91DGE-180F□	91DGE-180F□-T	180	1φ 220	50	4	Cont.	8.10	0.810	1250	1.50	14.03	1.403	8.0 / 450
			1φ 240				9.70	0.970	1300	1.60	13.49	1.349	

- 1) 모터 모델명 * 자리에는 전압코드가, □ 안에는 부차되는 감속기의 모델 타입명이 들어갑니다.
- 2) 전압코드 A, D, T는 TPI(Thermal Protector) 부착 사양입니다.
- 3) Gear Type Shaft는 감속기 부착용이며 D-Cut 및 Key Type Shaft는 모터 단독 사용시의 출력축입니다.

감속기 부착 시 최대허용토크

60Hz

Motor Model	Gearbox Model	감속비	3	3.6	5	6	7.5	9	10	12.5	15	18	20	25	30	36	40	50	60	75	90	100	120	150	180	200	
91DG*-180F□	9HBK□BH	kgfcm	26.6	32.0	44.4	53.3	66.6	79.9	88.8	100.0	120.0	144.0	160.0	180.8	217.0	260.4	289.3	300.0	300.0	300.0	300.0	300.0	300.0	300.0	300.0	300.0	300.0
180FH	9HFK□BH	N.m	2.61	3.13	4.35	5.22	6.52	7.83	8.70	9.80	11.76	14.11	15.68	17.72	21.26	25.51	28.35	29.40	29.40	29.40	29.40	29.40	29.40	29.40	29.40	29.40	29.40

Motor Model	Gearbox Model	Gear Ratio	r/min												
			360	240	180	120	90	72	60	45	36	30	22	18	
91DG*-180F□	9WHD□-030	kgfcm	38.1	55.2	71.0	99.9	126.2	144.6	168.3	183.7	173.5	163.3	132.7	-	
		N.m	3.74	5.41	6.96	9.79	12.37	14.17	16.49	18.00	17.00	16.00	13.00	-	
91DG*-180F□	9WHD□-040	kgfcm	-	-	-	-	-	-	-	-	-	267.4	299.8	295.0	270.0
		N.m	-	-	-	-	-	-	-	-	-	26.20	29.38	28.91	26.46

Motor Model	Gearbox Model	감속비	r/min													
			120	90	72	60	45	36	30	22.5	18	15	11.3	9	8	7.5
91DG*-180F□	9HC□□	kgfcm	120	160	200	240	320	400	480	640	800	960	1280	1600	1800	1800
		N.m	11.8	15.7	19.6	23.5	31.4	39.2	47	62.7	78.4	94.1	125	157	176	176

50Hz

Motor Model	Gearbox Model	감속비	3	3.6	5	6	7.5	9	10	12.5	15	18	20	25	30	36	40	50	60	75	90	100	120	150	180	200
91DG*-180F□	9HBK□BH	kgfcm	32.8	39.3	54.6	65.5	81.9	98.3	109.2	123.1	147.7	177.2	196.9	222.5	267.0	300.0	300.0	300.0	300.0	300.0	300.0	300.0	300.0	300.0	300.0	300.0
180FH	9HFK□BH	N.m	3.21	3.85	5.35	6.42	8.03	9.63	10.71	12.06	14.47	17.37	19.30	21.81	26.17	29.40	29.40	29.40	29.40	29.40	29.40	29.40	29.40	29.40	29.40	29.40

Motor Model	Gearbox Model	Gear Ratio	r/min												
			300	240	180	120	90	72	60	45	36	30	22	18	
91DG*-180F□	9WHD□-030	kgfcm	46.9	68.0	87.4	123.0	155.4	178.0	204.1	183.7	173.5	163.3	132.7	-	
		N.m	4.60	6.66	8.56	12.05	15.23	17.45	20.00	18.00	17.00	16.00	13.00	-	
91DG*-180F□	9WHD□-040	kgfcm	-	-	-	-	-	-	-	-	-	329.1	330.0	295.0	270.0
		N.m	-	-	-	-	-	-	-	-	-	32.25	32.34	28.91	26.46

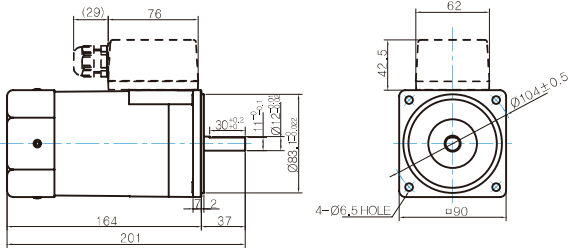
Motor Model	Gearbox Model	감속비	r/min													
			100	75	60	50	37.5	30	25	18.8	15	12.5	9.4	7.5	6.7	6.3
91DG*-180F□	9HC□□	kgfcm	148	197	246	295	394	492	591	788	984	1181	1575	1800	1800	1800
		N.m	14.5	19.3	24.1	28.9	38.6	48.2	57.9	77.2	96.4	116	154	176	176	

- 1) 모터 모델명 □ 안에는 전압코드가 들어갑니다.
- 2) 감속기 모델명 □ 안에는 감속비가 들어갑니다.
- 3) 위의 표에서 색칠된 범위의 감속비를 선택했을 때 감속기의 출력축은 모터의 출력축과 같은 방향으로 회전합니다. 흰색 바탕 범위의 감속비에서는 감속기 출력축은 모터 출력축의 회전방향과 반대방향으로 회전합니다.
- 4) 회전속도(r/min)는 모터의 동기회전속도(50Hz:1500r/min, 60Hz:1800r/min)를 감속비로 나누어 계산합니다. 실제 회전속도는 부하의 크기에 따라 표시보다 2~20% 정도 느립니다.

Dimensions

MOTOR ONLY

- MOTOR MODEL:
9IDD□-180F(-T) (GENERAL FAN)



MOTOR OUTPUT SHAFT

MODEL	SPEC
D-CUT TYPE	
9IDD□-180F	
KEY TYPE	
9IDK□-180F	

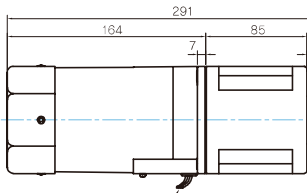
KEY SPEC

MOTOR

GEARED MOTOR

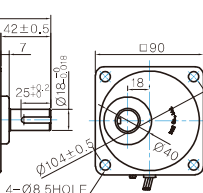
H TYPE GEARBOX

- MOTOR MODEL:
9IDG□-180FH (GENERAL FAN)

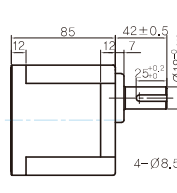


LEAD WIRE 300mm
UL STYLE NO.3271 AWG NO.20

- GEARBOX MODEL:
9HBK□BH



- GEARBOX MODEL:
9HFK□BH



GEARBOX OUTPUT SHAFT

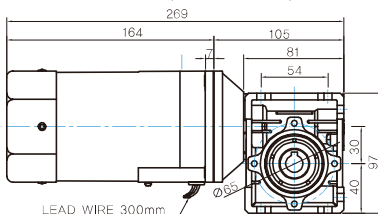
MODEL	SPEC
KEY TYPE	
9HBK□BH	
9HFK□BH	

KEY SPEC

GEARBOX

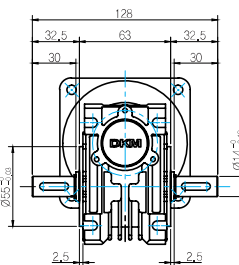
WH TYPE GEARBOX

- MOTOR MODEL:
9IDG□-180FWH (GENERAL FAN)

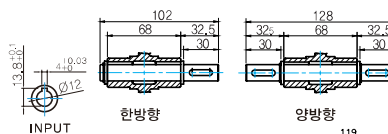


LEAD WIRE 300mm
UL STYLE NO.3271 AWG NO.20

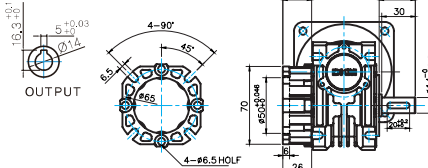
- GEARBOX MODEL:
9WHD□-030



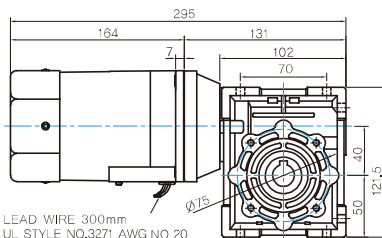
SHAFT



FLANGE

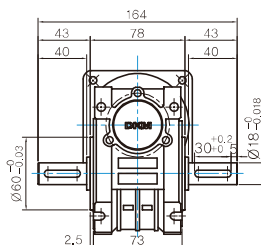


- MOTOR MODEL:
9IDG□-180FWH (GENERAL FAN)



LEAD WIRE 300mm
UL STYLE NO.3271 AWG NO.20

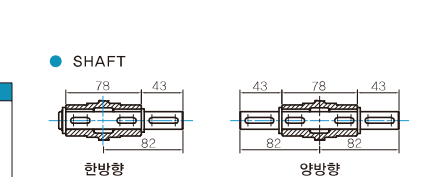
- GEARBOX MODEL:
9WHD□-040



SHAFT



FLANGE

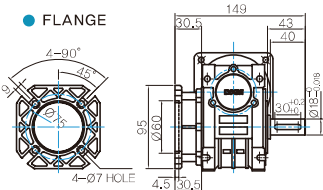


KEY SPEC

GEARBOX

* 출력 FLANGE와 SHAFT는 별매입니다.

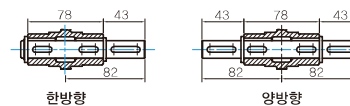
FLANGE



KEY SPEC

GEARBOX

SHAFT

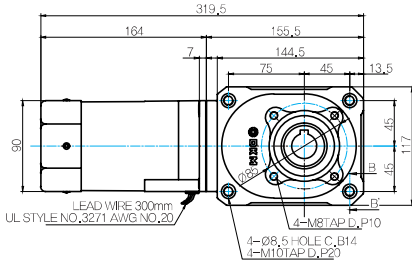


B AC Motors

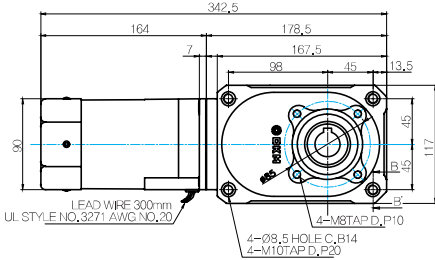
Induction Motor 180W(□ 90mm)

HC TYPE GEARBOX

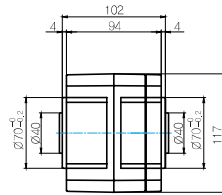
- MOTOR MODEL : 9IDG□-180FHC (GENERAL FAN)



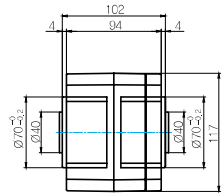
- MOTOR MODEL : 9IDG□-180FHC (GENERAL FAN)



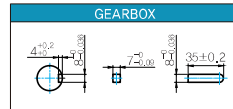
- GEARBOX MODEL : 9HC(15 ~ 60)□



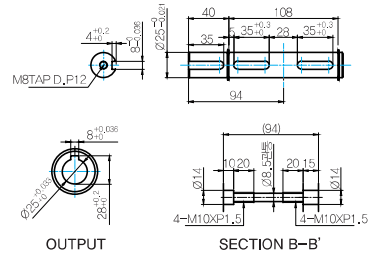
- GEARBOX MODEL : 9HC(80 ~ 240)□



- KEY SPEC



- SHAFT



WEIGHT

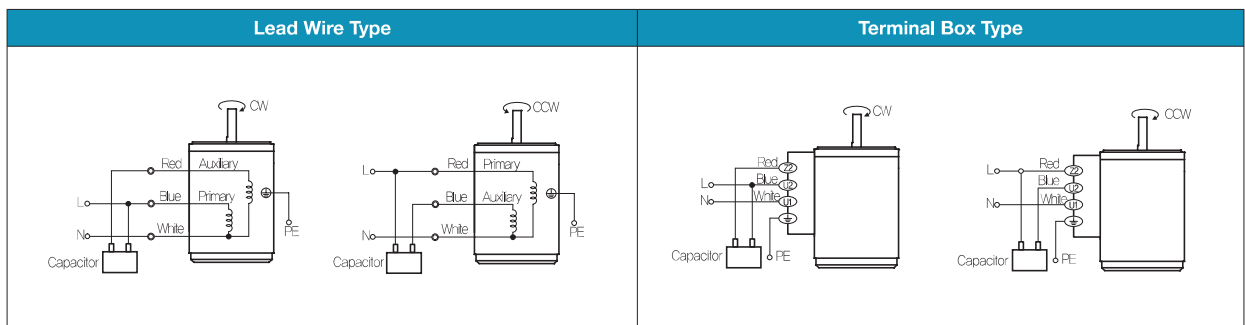
PART	WEIGHT(Kg)
MOTOR	3,05
9HB(F)K3BH - 9HB(F)K10BH	1,62
9HB(F)K12.5BH - 9HB(F)K20BH	1,68
9HB(F)K25BH - 9HB(F)K60BH	1,73
9HB(F)K75BH - 9HB(F)K200BH	1,78
9WHD□-030	1,2
9HC15□	4,05
9HC20□~9HC60□	4,1
9HC80□~9HC240□	4,75
9XD10□□	0,6

* 출력 FLANGE와 SHAFT는 별매입니다.

Motor Images



결선도



- 회전방향은 모터 축 측에서 본 방향을 나타냅니다.
- CW는 시계방향, CCW는 반시계방향입니다.
- 단상 모터의 회전방향 전환은 모터 정지 후에 실시하여 주십시오. 모터 회전 중에 회전방향을 전환하면 방향이 전환되지 않거나 시간이 지체되어 전환되는 경우가 있습니다.